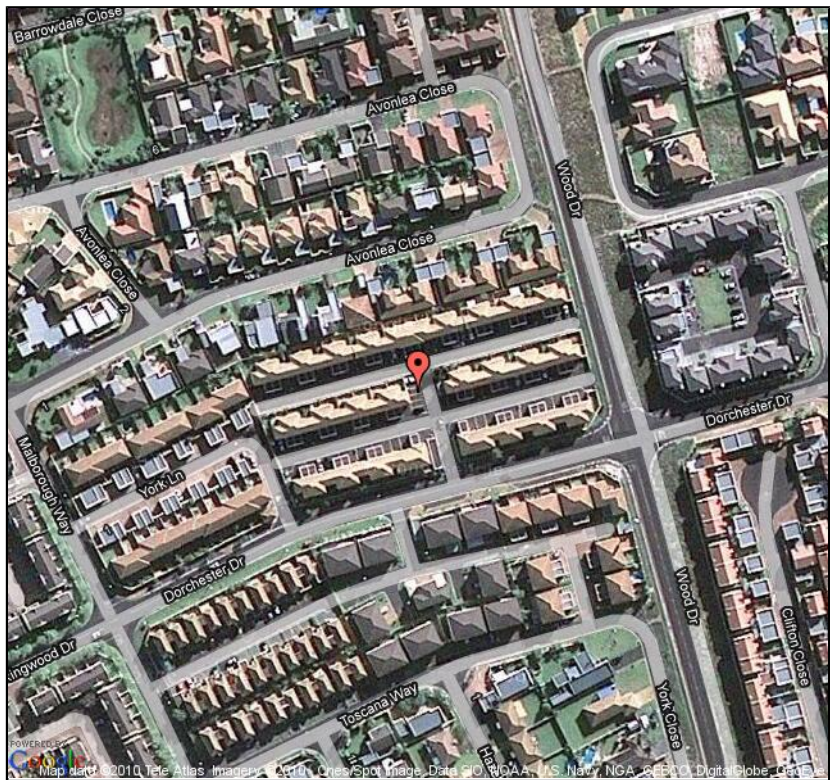


BUDGET PROPERTY INFORMATION REPORT

REFERENCE 102790

87 RINGWOOD DRIVE PARKLANDS
UNIT 9 SS BELLA PARK

ERF 4591 PARKLANDS



Property Information

This section contains the most important information on a property. The information are compiled from various sources and includes official Deeds Office information. It is important to have the correct information especially when you are planning on buying or selling the property as incorrect information can lead to delays in the transfer of the property.

Property Type	SECTIONAL SCHEME	Street Number	87
Erf Number	4591	Street Name	RINGWOOD DRIVE
Portion Number	0	Suburb	PARKLANDS
Township	PARKLANDS	Postcode	7441
Property Size	59	Province	WESTERN CAPE
Deeds Registrar	CAPE TOWN	Municipality	CITY OF CAPE TOWN
Local Authority	CITY OF CAPE TOWN	Unit No	9
Complex Name	SS BELLA PARK		

Comparable Sales

This section shows the details of the 15 most relevant comparable sales.

NUMBER	DISTANCE	SALE DATE	SALE PRICE	ERF SIZE	SUBURB	COMPLEX NAME	UNIT NO
1	0.00 m	15/10/2009	R565,000.00	96	PARKLANDS	SS BELLA PARK	41
2	0.00 m	13/07/2009	R410,000.00	58	PARKLANDS	SS BELLA PARK	53
3	0.00 m	24/02/2009	R510,000.00	58	PARKLANDS	SS BELLA PARK	26
4	0.00 m	09/10/2008	R625,000.00	96	PARKLANDS	SS BELLA PARK	38
5	0.00 m	08/05/2008	R650,000.00	96	PARKLANDS	SS BELLA PARK	21
6	0.00 m	22/01/2008	R670,000.00	96	PARKLANDS	SS BELLA PARK	20
7	0.00 m	19/11/2007	R689,000.00	96	PARKLANDS	SS BELLA PARK	37
8	0.00 m	04/09/2007	R650,000.00	96	PARKLANDS	SS BELLA PARK	35
9	0.00 m	12/08/2007	R650,000.00	96	PARKLANDS	SS BELLA PARK	16
10	0.00 m	12/06/2007	R445,000.00	58	PARKLANDS	SS BELLA PARK	52
11	0.00 m	11/06/2007	R660,000.00	96	PARKLANDS	SS BELLA PARK	24
12	0.00 m	24/05/2007	R675,000.00	96	PARKLANDS	SS BELLA PARK	37
13	0.00 m	11/05/2007	R675,000.00	96	PARKLANDS	SS BELLA PARK	39
14	211.82 m	15/09/2009	R510,000.00	64	PARKLANDS	SS DE OUDE KAAP	21
15	211.82 m	27/03/2009	R480,000.00	64	PARKLANDS	SS DE OUDE KAAP	52



Disclaimer

Please note that AfriDeed obtains data from a broad range of 3rd party sources and – despite the application of proprietary data cleaning processes – cannot guarantee the accuracy of the information provided in this report. It is expressly recorded that information provided in this report is not intended to constitute legal, financial, accounting, tax, investment, consulting or other professional advice.

This report does not contain any confidential information relating to the property owner or any owners residing in the suburb. All bond, home loan and property registration information in the reports is from the Deeds Office where information on all property registrations, property transfers as well as all registered bonds / home loans are kept. This is public domain information and accessible by any person..

